

# Oracle® Communications IDIH Audit Viewer



Release 8.2.3  
F35863-01  
October 2020



Oracle Communications IDIH Audit Viewer, Release 8.2.3

F35863-01

Copyright © 2014, 2020, Oracle and/or its affiliates.

This software and related documentation are provided under a license agreement containing restrictions on use and disclosure and are protected by intellectual property laws. Except as expressly permitted in your license agreement or allowed by law, you may not use, copy, reproduce, translate, broadcast, modify, license, transmit, distribute, exhibit, perform, publish, or display any part, in any form, or by any means. Reverse engineering, disassembly, or decompilation of this software, unless required by law for interoperability, is prohibited.

The information contained herein is subject to change without notice and is not warranted to be error-free. If you find any errors, please report them to us in writing.

If this is software or related documentation that is delivered to the U.S. Government or anyone licensing it on behalf of the U.S. Government, then the following notice is applicable:

U.S. GOVERNMENT END USERS: Oracle programs (including any operating system, integrated software, any programs embedded, installed or activated on delivered hardware, and modifications of such programs) and Oracle computer documentation or other Oracle data delivered to or accessed by U.S. Government end users are "commercial computer software" or "commercial computer software documentation" pursuant to the applicable Federal Acquisition Regulation and agency-specific supplemental regulations. As such, the use, reproduction, duplication, release, display, disclosure, modification, preparation of derivative works, and/or adaptation of i) Oracle programs (including any operating system, integrated software, any programs embedded, installed or activated on delivered hardware, and modifications of such programs), ii) Oracle computer documentation and/or iii) other Oracle data, is subject to the rights and limitations specified in the license contained in the applicable contract. The terms governing the U.S. Government's use of Oracle cloud services are defined by the applicable contract for such services. No other rights are granted to the U.S. Government.

This software or hardware is developed for general use in a variety of information management applications. It is not developed or intended for use in any inherently dangerous applications, including applications that may create a risk of personal injury. If you use this software or hardware in dangerous applications, then you shall be responsible to take all appropriate fail-safe, backup, redundancy, and other measures to ensure its safe use. Oracle Corporation and its affiliates disclaim any liability for any damages caused by use of this software or hardware in dangerous applications.

Oracle and Java are registered trademarks of Oracle and/or its affiliates. Other names may be trademarks of their respective owners.

Intel and Intel Inside are trademarks or registered trademarks of Intel Corporation. All SPARC trademarks are used under license and are trademarks or registered trademarks of SPARC International, Inc. AMD, Epyc, and the AMD logo are trademarks or registered trademarks of Advanced Micro Devices. UNIX is a registered trademark of The Open Group.

This software or hardware and documentation may provide access to or information about content, products, and services from third parties. Oracle Corporation and its affiliates are not responsible for and expressly disclaim all warranties of any kind with respect to third-party content, products, and services unless otherwise set forth in an applicable agreement between you and Oracle. Oracle Corporation and its affiliates will not be responsible for any loss, costs, or damages incurred due to your access to or use of third-party content, products, or services, except as set forth in an applicable agreement between you and Oracle.

# Contents

## 1 Introduction

---

Revision History	1-1
Overview	1-1
Scope and Audience	1-1
Manual Organization	1-1
My Oracle Support	1-1

## 2 Working in Audit Viewer

---

Overview	2-1
Accessing Audit Viewer	2-1
Setting User Preferences on IDIH Dashboard	2-1
Setting Time Format	2-1
Setting Mapping Preferences	2-2
Alarm Status Indicator	2-2
User Activity Table	2-4
Tool Bar	2-4
Toolbar	2-4
Selecting Blocks of Records	2-5
Audit Viewer Functionality	2-5
Creating or Modifying a Query for Filtering	2-5
Executing a Query	2-6

## List of Figures

---

2-1	Alarm Status Indicator	2-3
2-2	Alarm List	2-3
2-3	Audit Viewer Toolbar	2-4
2-4	Audit Viewer Query Dialog	2-5

# 1

## Introduction

This chapter contains an overview of the Audit Viewer application of the Integrated Diameter Intelligence Hub. The contents include sections on the organization, scope, and audience of the documentation, as well how to receive customer support assistance.

## Revision History

Date	Description
August 2011	Initial Release
June 2016	Updated to include accessibility changes

## Overview

This documentation describes the functionality of the Audit Viewer application within the Integrated Diameter Intelligence Hub.

 **Note:**

The Audit Viewer application is only available to a user logging into IDIH as "idihadmin."

## Scope and Audience

This documentation is intended for personnel who maintain operation of IDIH. It provides information about Audit Viewer and is designed around performing common tasks to efficiently and effectively monitor applications and user's activities as well as alarm status.

## Manual Organization

[Introduction](#) contains general information about this document.

[Working in Audit Viewer](#) provides basic information to begin using the Audit Viewer application.

## My Oracle Support

My Oracle Support (<https://support.oracle.com>) is your initial point of contact for all product support and training needs. A representative at Customer Access Support can assist you with My Oracle Support registration.

Call the Customer Access Support main number at 1-800-223-1711 (toll-free in the US), or call the Oracle Support hotline for your local country from the list at <http://www.oracle.com/us/support/contact/index.html>. When calling, make the selections in the sequence shown below on the Support telephone menu:

1. Select **2** for New Service Request.
2. Select **3** for Hardware, Networking and Solaris Operating System Support.
3. Select one of the following options:
  - For Technical issues such as creating a new Service Request (SR), select **1**.
  - For Non-technical issues such as registration or assistance with My Oracle Support, select **2**.

You are connected to a live agent who can assist you with My Oracle Support registration and opening a support ticket.

My Oracle Support is available 24 hours a day, 7 days a week, 365 days a year.

# 2

## Working in Audit Viewer

This chapter provides information about procedures used when working in the Audit Viewer application.

### Overview

Audit Viewer is a specific-purpose application. It allows the App Server to monitor the activities of logged-in users and displays records of those activities.

### Accessing Audit Viewer

To open Audit Viewer, follow these steps:

1. Log in to **IDIH** .  
The IDIH Application board is displayed.
2. Click **Audit Viewer**.  
The Audit Viewer home page is displayed.

### Setting User Preferences on IDIH Dashboard

Once inside IDIH, a user can set user preferences. These include:

- Time specifications (such as date format, time zone)
- Enumeration values (numerals vs. text)

### Setting Time Format

Follow these steps to set the time format:

1. Click **User Preferences** on the Application board.  
The User Preferences screen is displayed.
2. Click the **Date/Time** tab.  
The Date/Time screen is displayed. The red asterisk denotes a required field.



#### Note:

Use the tips on the screen to help configure the time format.

3. Enter the format for these time-related displays.
  - **Date format**
  - **Time format**

- **Date and time fields**
4. Select the formats for these time-related displays by using the drop-down arrow.
    - **Duration fields** - how the hours, minutes, seconds, and milliseconds of the Time format is displayed
    - **Time zone**

 **Note:**

The local time zone must be chosen to get local time.

5. To reset the time-related displays to default settings, click **Reset**.
6. Click **Apply** to save settings.

## Setting Mapping Preferences

The user can set the Mapping settings using the User Preferences feature.

Follow these steps to set Mapping preferences.

1. Click **User Preferences** in the Application board.

The User Preferences screen is displayed.
2. Click the **Mapping** tab.

The Mapping screen is displayed.
3. Check **Translate ENUM values** to display text instead of numerals.

Enumeration is used by TDRs to display text values instead of numeric. Rather than showing the numeral for Alarm Severity, the user interface will show the actual word, such as Major or Critical.
4. Check **IP Address to Node Name** to translate an IP Address to a textual Node Name.
5. To reset the Mapping values to the default, click **Reset**.
6. Click **Apply** to save the changes.

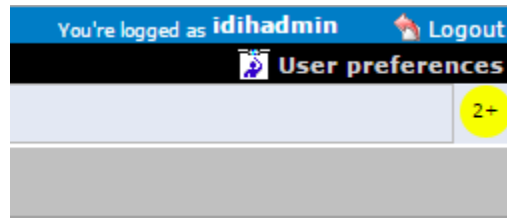
## Alarm Status Indicator

When logged in to IDIH, either directly or from **DSR** launch, the portal header displays a count of current alarms, as shown in [Figure 2-1](#). The alarm status indicator is a count of the highest severity of all open alarms and the alarm status indicator (circle) is the color (user defined, idihadmin) of the highest severity. For example, if there are zero critical, two major, one minor, and three warnings, then the alarm status indicator contains 2+ and the color is the user-defined color for major severity. The + is used to indicate that there are additional alarms at a lesser severity. The + does not appear if, for example, there are zero critical, two major, zero minor, and zero warnings.

Initially, the alarm status is empty (non-visible). Then, after a short interval, the system queries for open alarms and updates the alarm status indicator. After the first update, the system updates the alarm status indicator every 30 seconds.



Figure 2-1 Alarm Status Indicator

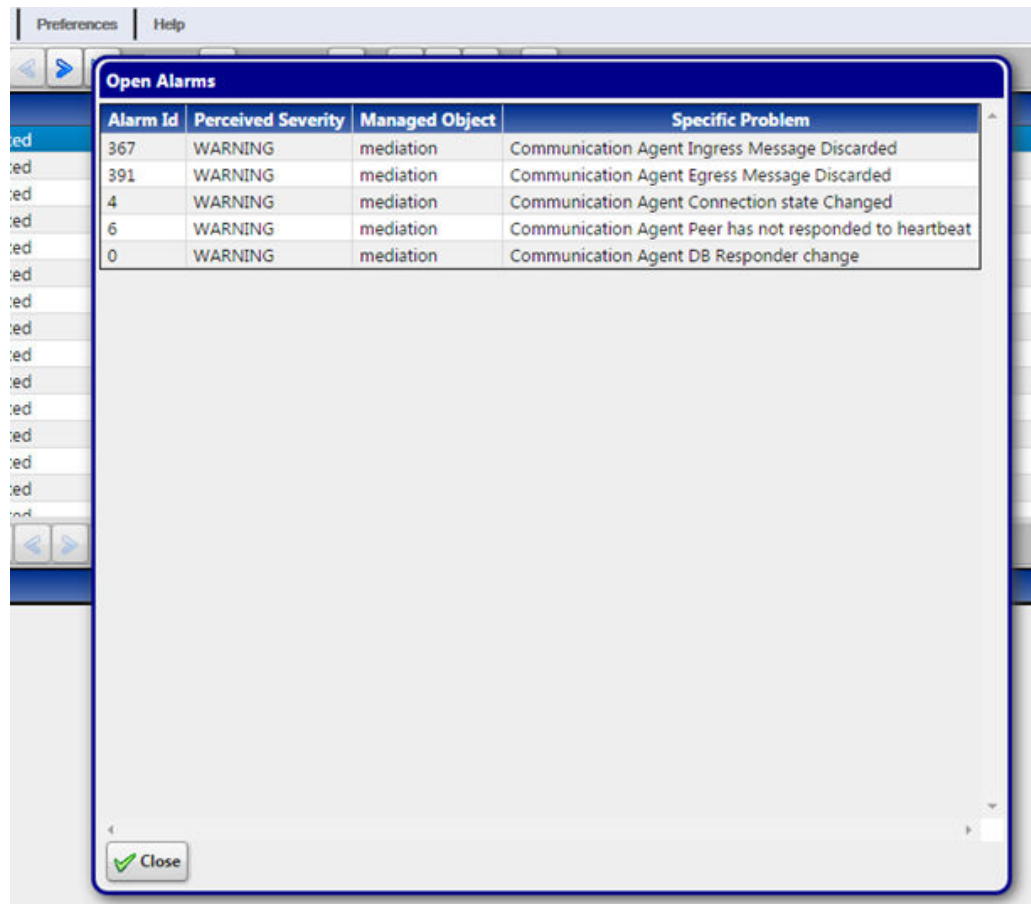


Selecting the alarm status indicator shows a brief description of the open alarms. The system displays the list of open alarms in tabular form, as shown in Figure 2-2. This list can be dismissed by pressing the **Close** on the Open Alarm dialog window.

 **Note:**

Only open alarms may be viewed. No other actions are provided such as clear or acknowledge.

Figure 2-2 Alarm List



## User Activity Table

The table consists of five headings:

- Time stamp - The time and date the log record was generated.
- User Id - Name of user
- Severity - Relative importance of the log record: Fatal, Error, Warn, Info and Debug.
- Application Id - **IDIH** application being used.
- Message - Log record information line.

The default display order for records is based on Audit Time stamps from most-recent-to-oldest. Clicking the column heading reverses the sort order. Selecting the column heading again toggles back to the default order. Other columns also can be used as sort criteria. Clicking on a column heading the first time puts the records in alphabetical order. Clicking again toggles to the reverse alphabetical order. In all cases an arrowhead symbol in one of the column headings defines the column which controls the sort and whether the sort is first-to-last or last-to-first.

## Tool Bar

The tool bar contains icons used to scroll up and down through lists of records larger than the display can accommodate in a single page, to sort or filter records in the table according to various criteria, and to count records on demand.

## Toolbar

The toolbar has several function buttons:

**Figure 2-3 Audit Viewer Toolbar**



**Filter** - enables the user to create filters for data records to make searches convenient.

**Navigation Arrows** - allows the user to move back and forth among the records.

**Set Size** - text box and check button allows the user to set a number of records to be displayed.

**Refresh** - enables the user to refresh the current screen to see all recent changes.

**Execute Query** - allows the user to set begin and end date parameters to run a query of the records.

**Message** - displays a dialog box showing the record's message.

## Selecting Blocks of Records

If the user wants to select a block of records, press the Shift key while clicking the first and last records of the block being selected.

## Audit Viewer Functionality

Audit Viewer supports various functions:

- Listing audit records - The records contain date and time, user login, **IDIH** application, problem severity and message information.
- Filtering audit records - Displayed audit logs can be filtered by user-defined queries.

## Creating or Modifying a Query for Filtering

To create or modify a query for use in filtering audit records, click **Filter**. The Query Dialog box opens.

Figure 2-4 Audit Viewer Query Dialog

Field	Operator	Value
-------	----------	-------

Click **Add** to create fields for a new query. The query can be deleted by clicking **Delete**.

When adding a condition, the corresponding label is added into the **Expression** field. It is added to the end of the expression with the selected **Operator** (AND or OR). Similarly, when the condition is removed from the query, the corresponding label is automatically removed from the expression and the expression is adjusted. When **Use Bracket** is selected, then the whole expression is closed in brackets before adding the new condition.

The query is validated before it is saved or executed. Several things are verified:

- Name is filled (verified for Save operation only, for Query Execution operation the name can be empty)
- All conditions have correct operator and correct value (empty value not allowed and must correspond to field type)
- Expression is well formed Boolean expression

Whenever any error occurs, the user is notified either in the Message Panel at the top of the Dialog box or next to the GUI element which caused the error (a condition or expression box).

Click **Save** to save a query for later use. The query appears in the Query List panel.

Click **Save As** to open a prompt asking for a new name. Confirms the name. A new query is created and saved for later use. The query appears in the Query List panel.

Now the query is ready for execution. Execute the query by clicking **Apply**.

## Executing a Query

When a query is executed, it is always executed on the currently selected audit record. A query can be executed in two ways:

1. By clicking **Apply** in the Query Dialog window (when creating or modifying a query), or
2. By selecting the an audit record and clicking **Execute Query** in the toolbar

Enter the time in which the search is about to be performed. The Begin and End date are pre-populated with the real begin and end date of the selected trace. Click on the icons next to the date and time text boxes and select the date in calendar and time in time selection widgets for better convenience.

Click **Execute** and the query is executed.